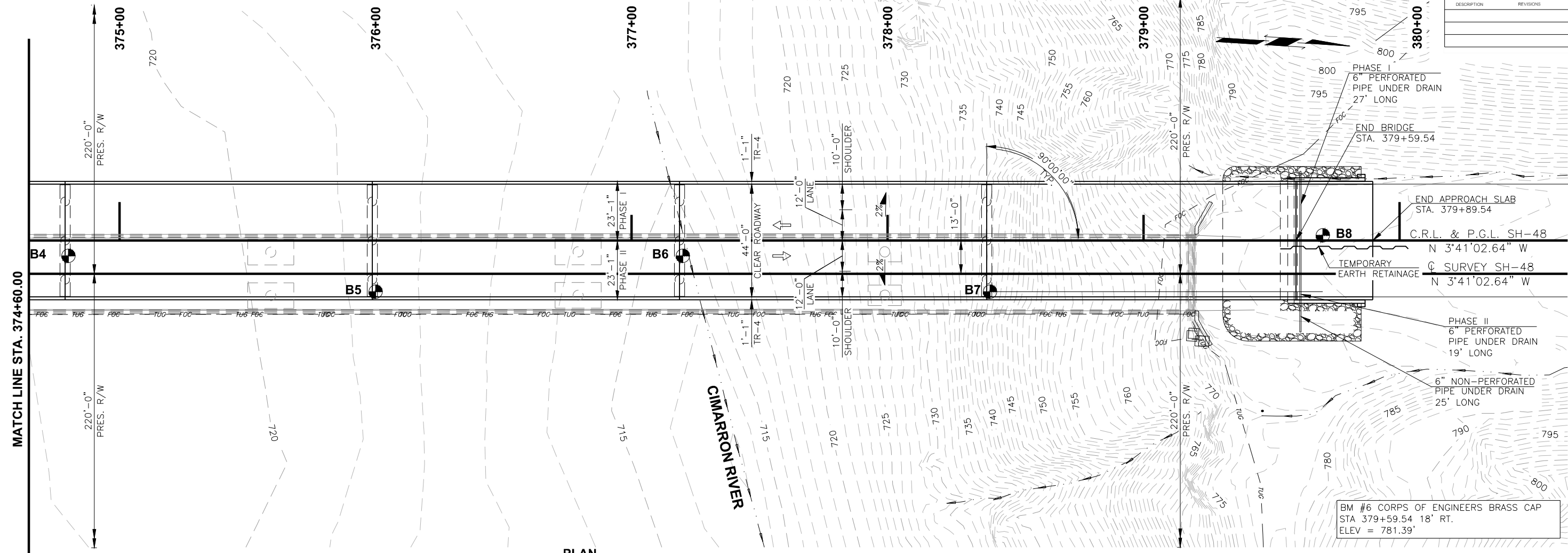
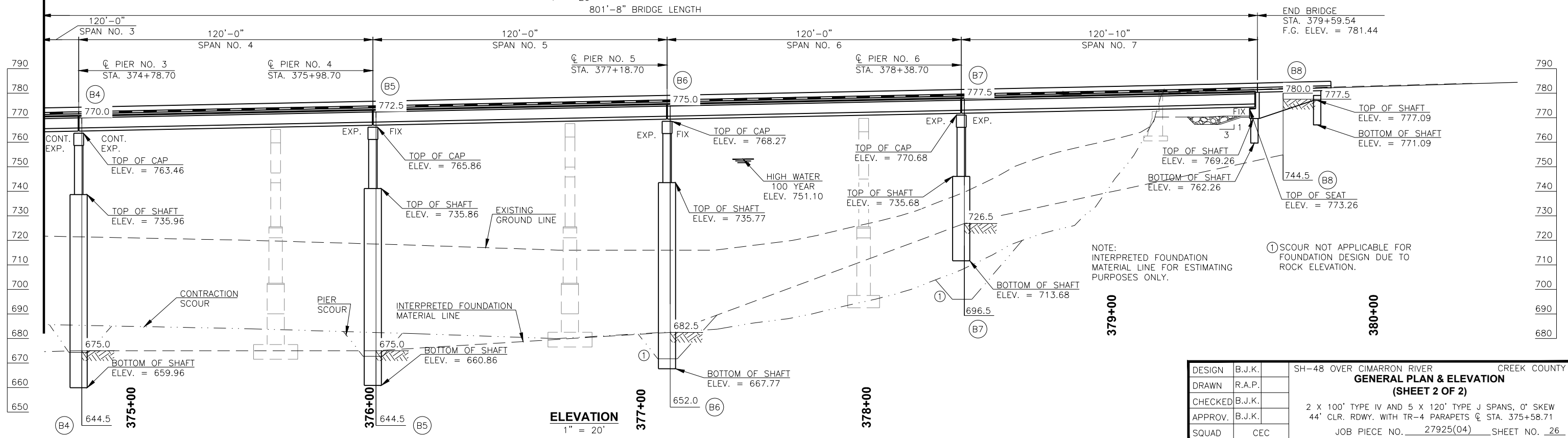


DESCRIPTION	REVISIONS	DATE



PLAN
1" = 20'
801'-8" BRIDGE LENGTH



ELEVATION
1" = 20'

DESIGN	B.J.K.	SH-48 OVER CIMARRON RIVER	CREEK COUNTY
DRAWN	R.A.P.	GENERAL PLAN & ELEVATION (SHEET 2 OF 2)	
CHECKED	B.J.K.		
APPROV.	B.J.K.	2 X 100' TYPE IV AND 5 X 120' TYPE J SPANS, 0' SKEW 44' CLR. RDWY. WITH TR-4 PARAPETS @ STA. 375+58.71	
SQUAD	CEC	JOB PIECE NO. 27925(04) SHEET NO. 26	